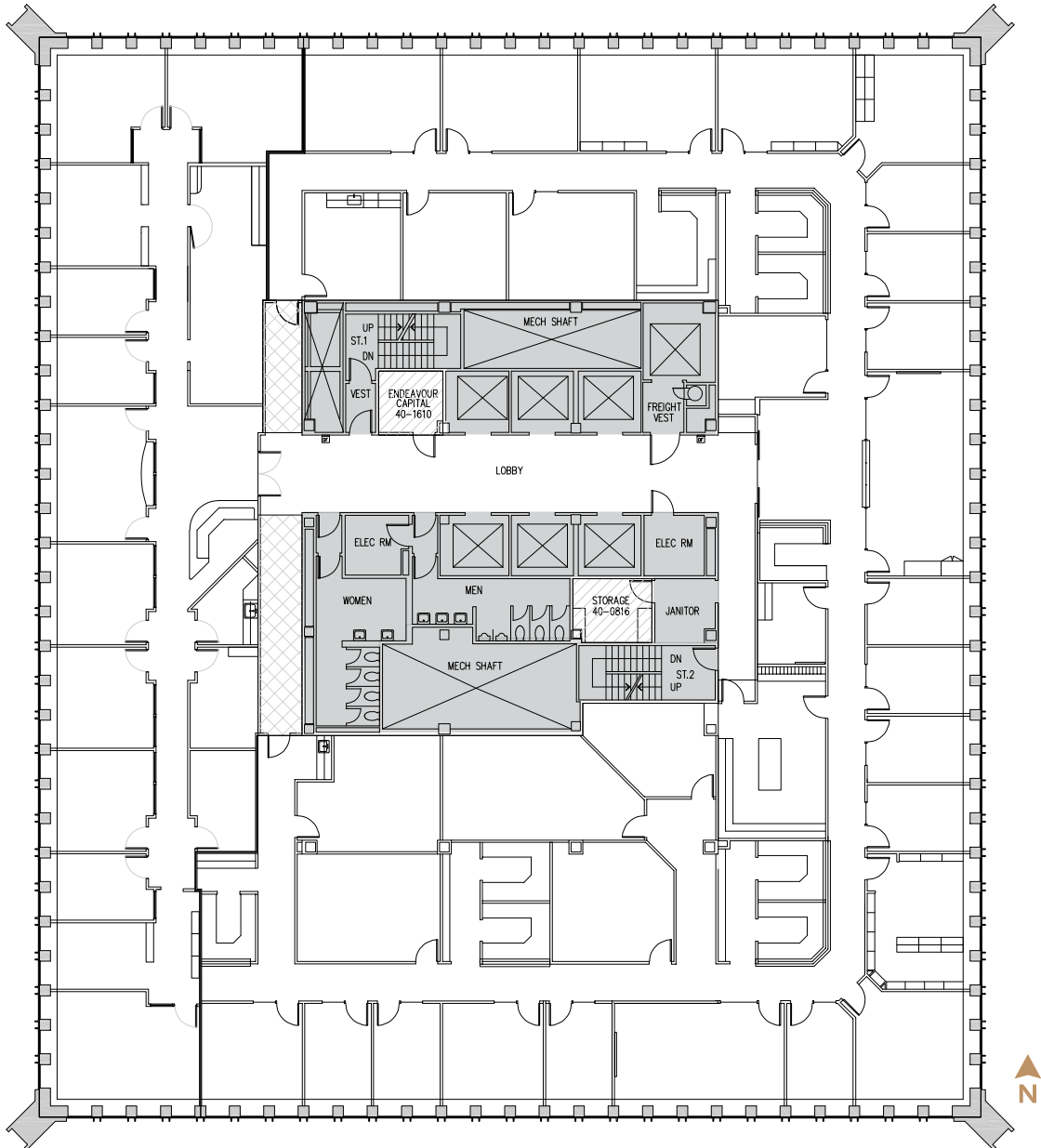


Safeco Plaza

1001 FOURTH AVENUE

SUITE 4000

20,108 SF • FULL FLOOR • AVAILABLE JANUARY 1, 2024



GREG INGLIN EXECUTIVE VICE PRESIDENT | +1 206 292 6128 | GREG.INGLIN@CBRE.COM

TIM OWENS SENIOR VICE PRESIDENT | +1 425 462 6913 | TIM.OWENS@CBRE.COM

